

The Sensible Shredder

fit for your application



Superior technology
at an affordable price!



The Woodchuck Shredder

compact and economical

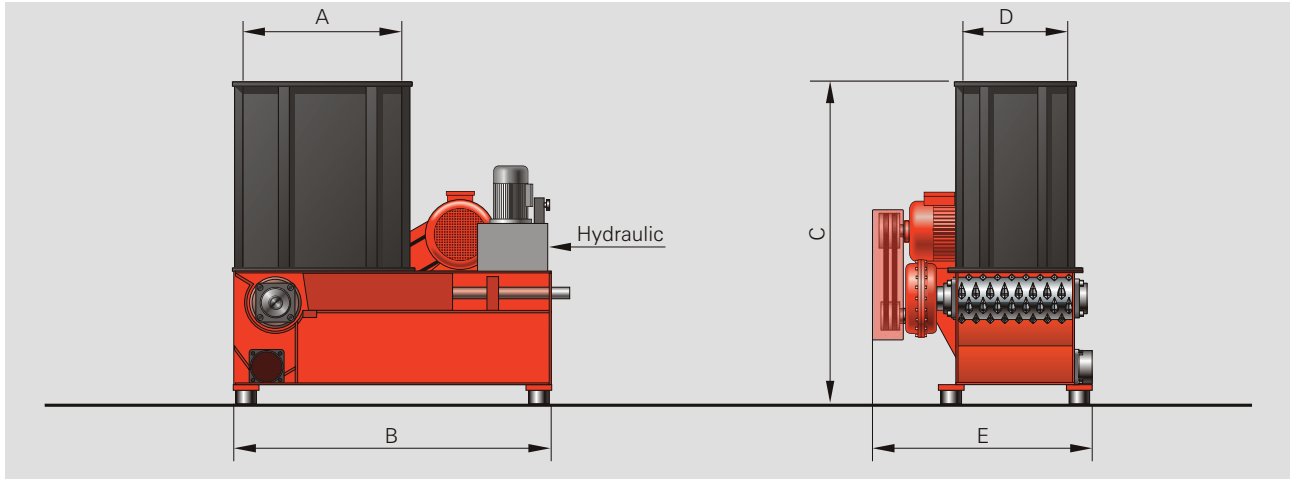
The Woodchuck shredder has been developed to accommodate waste reduction in the small to medium size shop. It is ideal for those looking to reduce their excess scrap material but do not have the volume to justify a large shredder.

The Woodchuck is simple to operate with a large hopper for material loading and a solid steel rotor to ensure reliable shredding at a consistent throughput rate. Machine can be loaded and left to run without supervision.

 Advanced technology for size reduction 

Technical Data

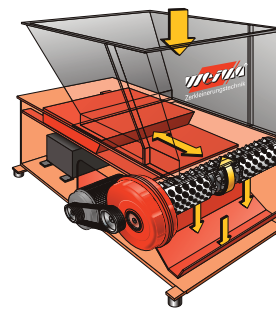
Woodchuck Shredder



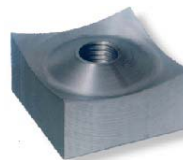
Woodchuck

Feed opening (inch/mm):	23.6x31.5 / 600x800
Hopper volume (yd ³ /m ³):	0.8 / 0.6
Throughput:	200-800 lbs/hr
Rotor diameter (inch/mm):	10 / 252
Rotor length (inch/mm):	23.6 / 600
Rotor speed (rpm):	60 - 100
Power (hp/kW):	20 / 15
Rotor knives:	14
Screen size (inch/mm):	3/4 - 2 / 15 - 50
Connection-Ø (inch/mm):	6 / 160
Air speed (cfm / m/sec):	1,300 / 23
Weight (approx. lbs/ ca.kg):	2,800 / 1,275

A (inch/mm):	31.5 / 800
B (inch/mm):	62.9 / 1,600
C (inch/mm):	64.5 / 1,640
D (inch/mm):	23.6 / 600
E (inch/mm):	45.3 / 1,150



Schematic view



4 x indexable cutters



Woodchuck in action

Shredding Systems by WEIMA

- Heavy-duty construction
- Plug & Play design with soft start
- Low maintenance
- Uniform chip size
- Patented V-Rotor System
- 4 x indexable knives
- Hydraulic ram
- Universal joint for hydraulic cylinder

WEIMA America, Inc.

3678 Centre Circle
Fort Mill, SC 29715 (USA)
Phone: 803-802-7170
Fax: 803-802-7098

Internet: www.weimaamerica.com
E-mail: info@weimaamerica.com



With locations in
Ilsfeld, Germany
Ternberg, Austria
Northants, Great Britain
La Ferté s.Jouarre, France
**and more than
50 sales offices worldwide!**

Advanced technology for size reduction